

We recognize this is a difficult time for many. At Edison, we are doing our part to provide support in these challenging times to safeguard our employees, communities, customers and candidates. Due to evolving changes related to the COVID-19 situation, we're exploring alternative ways to safely continue the recruitment and hiring process. As a result, you may be asked to leverage digital tools such as video interviewing and/or other formats. Should you advance through the recruitment and hiring process, instructions will be provided by our Human Resources team. We appreciate your patience and continued interest in careers with Edison.

**Careers**

Mei



SEARCH JOBS

Keyword

e.g. data scientist, envir

Q SEARCH

WORKING HERE HAS ITS REWARDS

We offer a competitive Total Rewards Package including a wide selection of health plans, preventive health reimbursement, 401(k) savings plan with company match and automatic company contributions, wellness programs

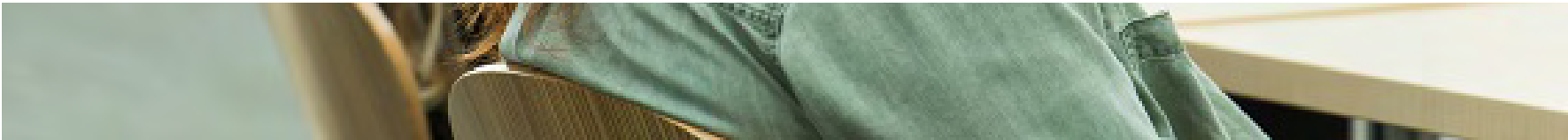
and initiatives, tuition reimbursement, competitive vacation/holiday program, professional development, volunteer programs, employee assistance program, philanthropy and matching contribution program, electric service discount, and many other perks!



Careers

Mei
⋮





HEALTH PLANS

**Careers****Mei**

MEDICAL

Wide selection of health plans (including telephonic* doctor visits), each providing screenings and preventive care at no out-of-pocket cost to you.



Careers

Mei



**Careers****Mei**
⋮

DENTAL

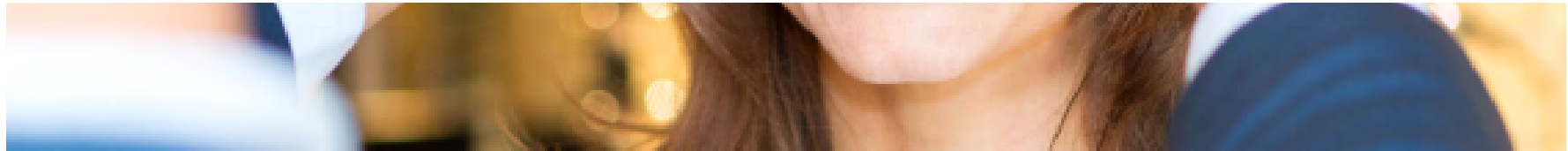
You'll have your choice of dental plans with full coverage for preventive dental care, coverage for orthodontic services for adults and children.



Careers

Mei
⋮



**Careers****Mei**
⋮

VISION

A vision plan that offer exams, lenses, frames contact lenses and a Lasik surgery benefit.

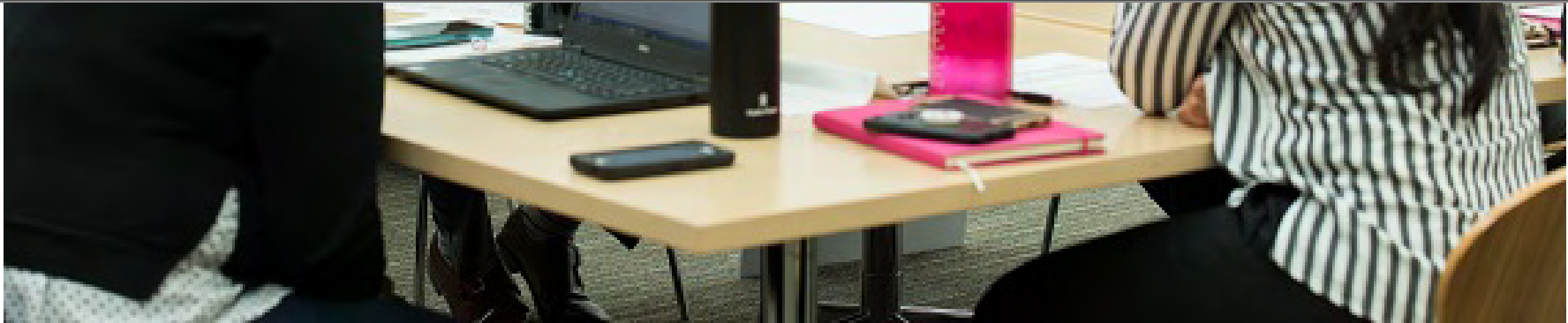
CAREER DEVELOPMENT AND COMMUTER SAVINGS





Careers

Mei



EDUCATIONAL REIMBURSEMENT

We want every employee to aspire to be his or her best, so we'll help support your efforts to get additional education that can advance your career, whether it's a professional development class, a certificate program or even tuition reimbursement to pursue your college degree.



**Careers****Mei**

RIDESHARE PROGRAMS

Sometimes getting to work is not easy! We can ease the stress and help pay for a vanpool or public transit and parking on a pre-tax basis. We offer a competitive subsidy on those commuting costs, up to the dollar amount allowable.

RETIREMENT & INVESTING



Careers

Mei
⋮

401(K) WITH COMPANY MATCH AND AUTOMATIC COMPANY CONTRIBUTIONS

We make company contributions to your 401(k) account, even if you don't participate. If you do choose to participate, we provide a generous company match to help you meet your retirement goals. We also offer a wide selection of investment options. You will have access to an independent third-party investment advisor for advice regarding investment decisions and retirement planning customized to your own personal situation.

We also make company contributions to a retiree healthcare reimbursement account to help you with medical expenses in retirement.



Careers

Mei
...

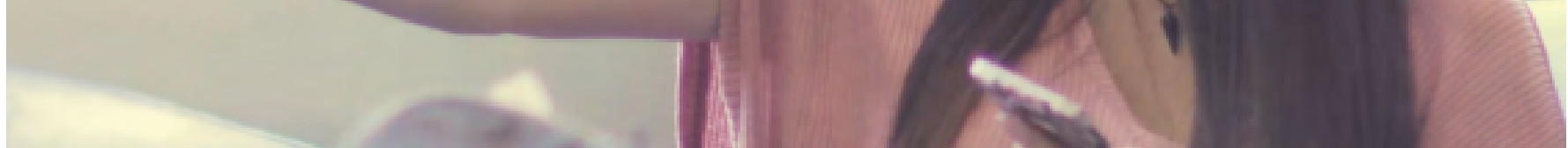
HEALTHY AND PRODUCTIVE WORK/LIFE BALANCE



**Careers****Mei**

Our Preventive Health Account helps pay for fitness, weight loss, smoking cessation, camping fees, lift tickets, and more. We also offer onsite Fitness Centers, Mindfulness Rooms, StairWell Programs and Walking Routes at select locations; a network of Wellness Ambassadors; as well as on-going communications about initiatives and activities to promote health and safety both at work and at home.



**Careers****Mei**
⋮

EMPLOYEE ASSISTANCE PROGRAM

Our Employee Assistance Program is available to you and your eligible family members. Company-paid access to helpful work/life resources 24 hours a day, seven days a week, as well as five free counseling sessions with a clinician, such as a psychologist, psychiatrist, or specialist.

WE CARE

We offer a workplace Lactation Program for new mothers, providing free state-of-the-art breast pump, milk storage kits, lactation consultant and lactation rooms.

There is Parental Bonding Supplement providing 100% salary replacement

for up to six weeks for parental bonding when combined with approved family leave benefits.



Careers

Mei
⋮

We are committed to accessibility and providing reasonable accommodations for individuals with disabilities. Our Disability Management Services office takes it seriously.

PRE-TAX BENEFITS

Pre-Tax Reimbursement Accounts such as our Health Care Reimbursement Account for pre-tax reimbursement of eligible out-of-pocket health care expenses (e.g., medical, dental, vision, or hearing). You can also take advantage of pre-tax reimbursement of eligible out-of-pocket dependent day care expenses (e.g., day care for children under age 13, or adult day care for someone living in your household).

PERKS!

- WorkLife Services through Optum designed to make life easier by helping you find referrals for: Caregiver support groups, In-home services such as housekeeping, meal services, night care and transportation, child and elder care,

service professionals such as carpenters, car repair shops, caterers, dry cleaners/tailors; electricians, landscapers and translators.



Careers

Mei
⋮

scheduling appointments, finding doctors, dentists, and other providers. Also helpful in resolving medical issues and understand processes used by health care professionals.

- Employee Discounts such as membership for Weight Watchers, electrical discount for those that live in our service area, Verizon cellphone service, auto/home/renter's insurance*, pet insurance*, identify theft insurance*, legal services plan *, discounts to local events through Recreation Connection.
- Financial Wellness* benefits offering unlimited access to resources such as webinars; videos and financial tools and unlimited objective advice from a financial planner.
- SCE Credit Union focused on providing a broad spectrum of financial services to meet all member needs
- * For benefits with an "*", please refer to Frequently Asked Questions section



**Careers****Me**

FREQUENTLY ASKED QUESTIONS

***Do all employees qualify for these benefits?**



How do I learn more about what benefits I may qualify for?



STAY UPDATED ABOUT NEW JOB OPENINGS

Join our Talent Network to get emails with career related news, upcoming events, and new employment opportunities! We look forward to staying in touch with you.

Stay Connected



Careers

Mei



ABOUT US

FEATURED CAREERS

EARLY CAREER

SEARCH CAREERS

TALENT NETWORK

EDISON INTERNATIONAL CAREERS

REFER TALENT

CAREER ENERGIZER TOOLKIT

Edison/Southern California Edison (SCE) is committed to building a diverse and inclusive workplace. We are a proud Equal Opportunity Employer and will not discriminate based on race, color, religion, sex, sexual orientation, gender identity, national origin, age, disability, protected veteran status or any other protected status. EEO is the Law/Pay Transparency. Edison/SCE participates in: E-Verify Program (English and Spanish) | Right to Work program (English and Spanish). Applicants have rights under Employment Laws.

If you require special assistance or accommodation while seeking employment with Southern California Edison, please contact Human Resources at (833) 343-0727 or (800) 352-8580 (Telecommunications device for the hearing impaired - TTY).

Please be aware of scammers posing as recruiters or employers, using reputable company names with the intention to collect confidential and/or financial information. If you receive an unsolicited or suspicious job offer or application that claims to be from Edison International or Southern California Edison, please report it to our security team at (626) 815-5611.

Edison Energy and its subsidiaries are not the same company as Southern California Edison, the utility, and they are not regulated by the California Public Utilities Commission



Careers

Mei
⋮

Copyright © 2021 Southern California Edison.

[Personal Information Request Notice](#) [Privacy Notice](#) [Terms of Service](#)

;
;